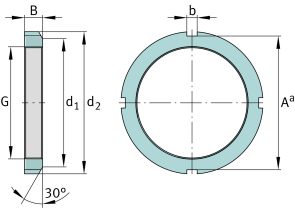
**FAG****KM20** 

Locknut

Locknuts KM, main dimensions to DIN 981

Technické informace



Main Dimensions & Performance Data

| | | |
|----------------|---------|------------------|
| G | M100x2 | Thread |
| d ₂ | 130 mm | Outside diameter |
| B | 18 mm | Width |
| ≈m | 0,76 kg | Hmotnost |

Mounting dimensions

| | | |
|----------------|--------|----------------------|
| d ₁ | 120 mm | Chamfer diameter |
| b | 10 mm | Width retaining slot |
| A ^a | 122 mm | Groove base distance |

Additional information

| | | |
|---|-----------|-----------------------------|
| F | 290.000 N | Axial load capacity, static |
| | MB20 | Fuse |
| | 30 ° | Chamfer angle |