


The Timken Company

4500 Mt Pleasant St. NW

N. Canton, OH 44720

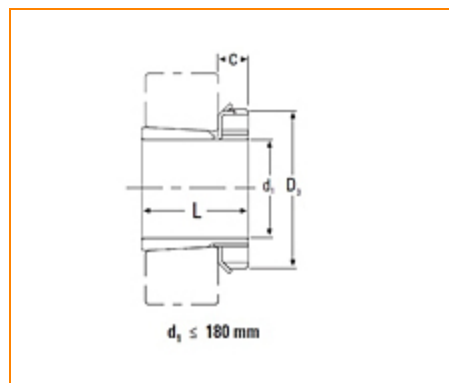
Phone: (234) 262-3000

E-Mail: CustomerCAD@timken.com • **Web site:** www.timken.com

Part Number H3028, Metric H Adapter Sleeve

- Safe and effective tapered bore bearing assembly.
- Includes mounting sleeve, locknut and lockwasher or lockplate.
- Other dimensions may be available, consult your Timken sales representative.

* Adapters with a C1 dimension use a lockplate as the locking device as shown in the illustration; otherwise, a lockwasher is used as the locking device.

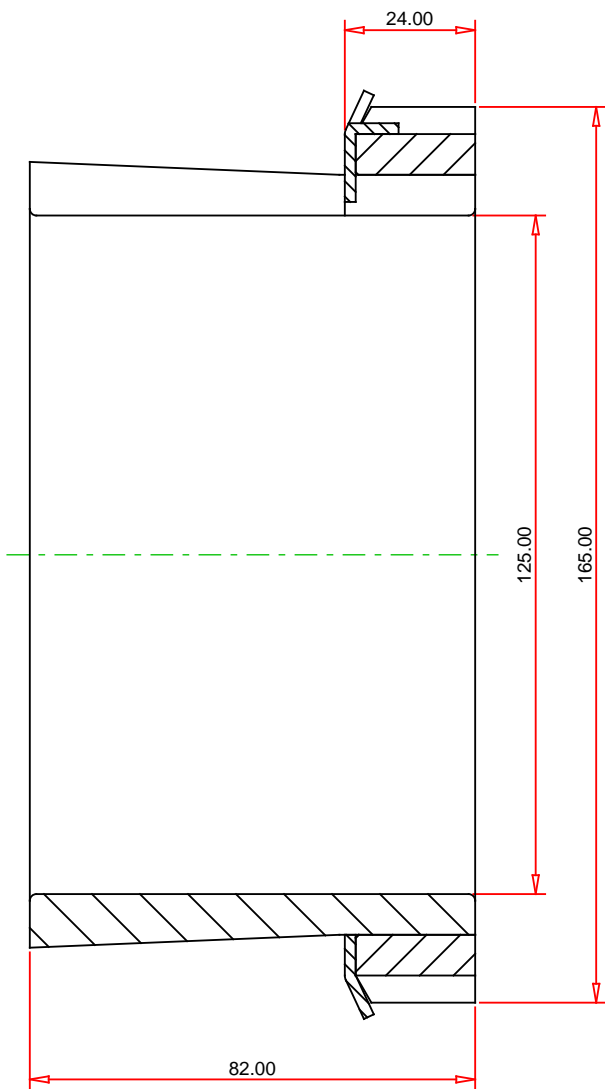


Specifications

d₁	125 mm
L	82 mm
C¹	24 mm
Thread G	M140x2
D₃	165 mm
Locknut	KML28
Lockwasher and Lockplates	MBL28
Appropriate Hydraulic Nut	HMV28



¹ Adapters with a C1 dimension use a lockplate as the locking device as shown in the illustration; otherwise, a lockwasher is used as the locking device.



METRIC UNITS

TIMKEN®

THE TIMKEN COMPANY
NORTH CANTON, OHIO USA

H3028
Metric H Adapter Sleeve

Every reasonable effort has been made to ensure the accuracy of the information contained in this writing, but no liability is accepted for errors, omissions or for any other reason.

FOR DISCUSSION ONLY